

The Environment

Environmental Policy

The Company recognizes that as a responsible member of society it has an important duty to operate in harmony with the environment. We engage in business with the aim of contributing to the sustainable development of society through production activities that respect environmental integrity, and by developing environmental preservation technologies.

Action plan

1. We aim to carry out environmental tasks in an organized way, and to implement environmental preservation activities continuously.
2. We will set appropriate objectives and targets for reducing the burden our activities impose on the environment.
3. We aim to provide society with products and services that contribute to the preservation of the

environment, as detailed below.

- (1) Through our products we endeavor to increase our value to society in terms of environmental protection, safety and hygiene.
- (2) We provide products and services to reduce environmental loads by obtaining a clear grasp of environmental needs and technical development.

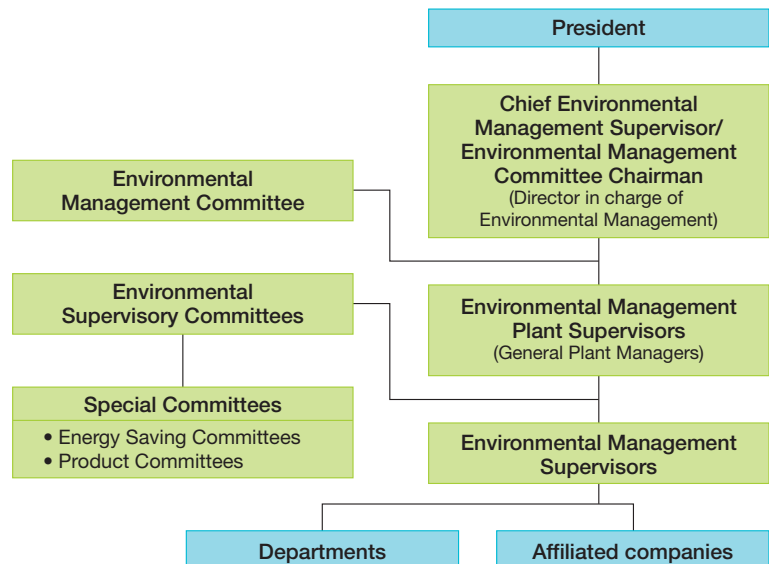
Common policy for plants

Taking into consideration its business activities, the local community and the surrounding environment, each plant sets out its own environmental policy, objectives and targets using methods compliant with international standards and operates in line with the following guidelines.

1. Respect laws and regulations and agreements we have concluded with external parties.

Environmental Management System

The Environmental Management Committee, headed by the Director in charge of Environmental Management, determines matters such as annual environmental management policies and programs of environmental activities for the whole company. Each plant has its own Environmental Supervisory Committee, which promotes environmental management activities and works hand in hand with other group companies to reduce the environmental impact of the Company's activities.



Medium-Term Plan for Environmental Management Activities (Fiscal 2009-2012)

We are promoting environmental management activities at our Muroran, Hiroshima and Yokohama plants. Social awareness has changed greatly regarding the need to deal with such issues as the mitigation of global warming, saving energy, and processing waste.

During the fiscal 2008, we undertook activities at each plant toward the achievement of the yearly targets set out in our medium-term plan for environmental management activities, covering the five-year period from fiscal 2006-2010.

With regard to the observance of laws and regulations, we implement environmental patrols at environmental-related facilities, plants, and other sites in the vicinity. We confirm that all environmental preservation-related laws and regulations are being observed, and that the environmental management system is functioning properly. To effectively communicate the results of the environmental patrols, we carry out employee training programs for affiliates and collaborating companies, as well as at our headquarters.

We will work to achieve the targets contained in our medium-term plan for environmental management activities for the four-year period which starts in fiscal 2009.

Environmental Preservation Activities

The following section introduces some of JSW's wide range of environmental preservation activities.

Reducing atmospheric emission of nickel compounds

At the Muroran Plant, we are working to ensure that atmospheric emission of nickel compounds are within prescribed standards by making the necessary revisions to operations, processes, and equipment, and through the introduction of new equipment.

Working together with the local municipal government since fiscal 2005, we have created our own voluntary controls, and have been undertaking various activities.

Safety and disaster prevention activities

We regularly implement environmental patrols at each plant to verify management status and audit data relating to specific air- and water-related facilities, pretreatment facilities, oil-water separation tanks and other facilities.

Community contribution

As part of our social contribution activities, we conduct a cleanup campaign along the main streets in the vicinity of our Yokohama Plant in April each year.

The cleanup campaign is conducted along roads between a nearest Station and our Yokohama Plant's main gate. Employees collect empty cans and pick up cigarette butts and other refuse. The trash is taken back to the plant, where it is separated and disposed of. We intend this to be an ongoing activity.

