

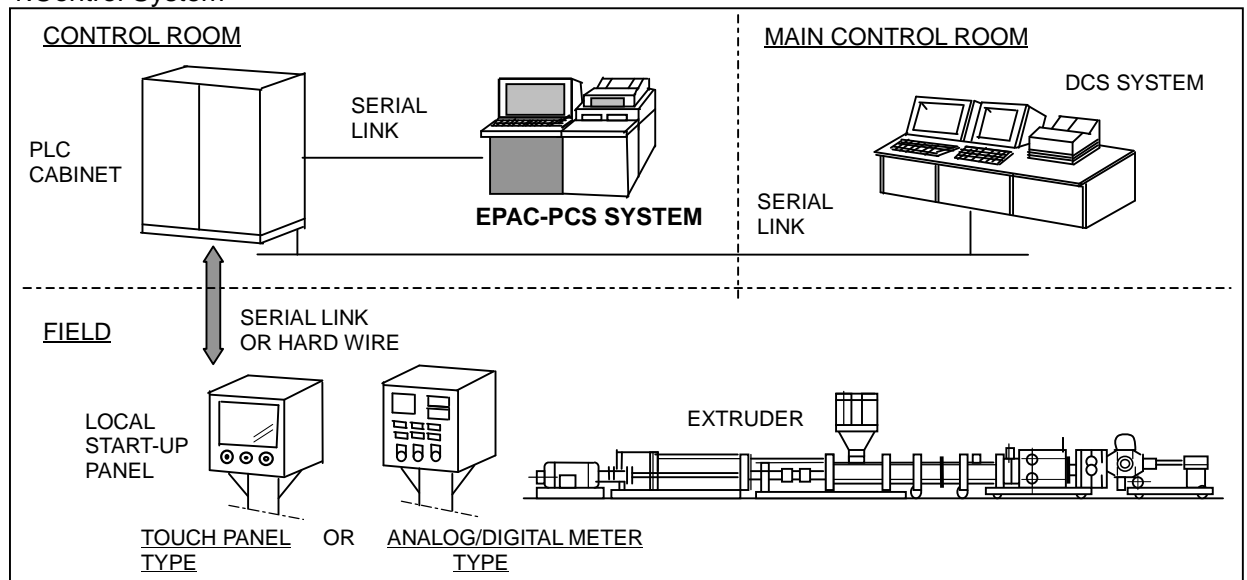
Pelletizer Control System PC Station "EPAC-PCS"

Continuous Stable Operation is the most important for the large capacity pelletizer, for which Distributed Control System is the one of solution with higher reliability.

Various kinds of control system has been provided; a local control panel, PLC control with a local operation board, DCS control with a local start-up panel.

Recently, Personal Computer Operation has been requested in the operator's room or close to the Extruder having the same function with DCS; a local panel for just start-up, PLC in service for all logic and process operation, and PC or DCS operation after start-up. Under such circumstance, JSW has developed a PC base control system (EPAC-PCS), consisting of a local operation stand, PC Operator's station and a PLC cubicle, which communicates with the customer's DCS.

1. Control System



2.PCS-HMI (Human Machine Interface)

General use type (PCS—GN)
in the control room



Local Pressurized Z-purge type (PCS—EP)
in the hazardous area



3.Characteristics

Color CRT (19 inch) display is in service for human machine interface, with easy operation and monitoring displays such as General Over View, monitoring displays, alarm displays, and PID process control displays, which communicate with a PLC controller in the market. Redundant PLC and communication system as an option.

1) PCC-HMI

- a) 19" Color CRT
- b) Windows NT
- c) Intellusion ; Fix-D-Max

2) Display

- a) Overview
- b) G/P & Cutter etc.
- c) Alarm Summary
- d) PID Control Setting

3) PLC

- a) Rockwell AB
- b) Siemens
- c) Mitsubishi Melsec
- d) Omron
- e) Modicon
- f) GE-Fanuc

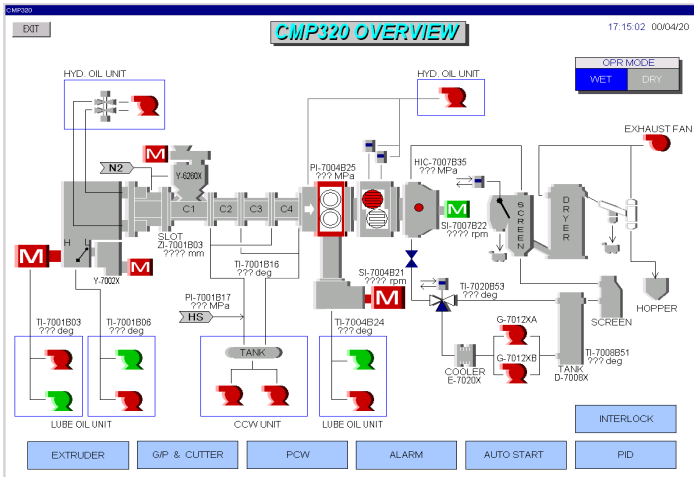
4) Communication

- a) Modbus
- b) Redundant (Option)

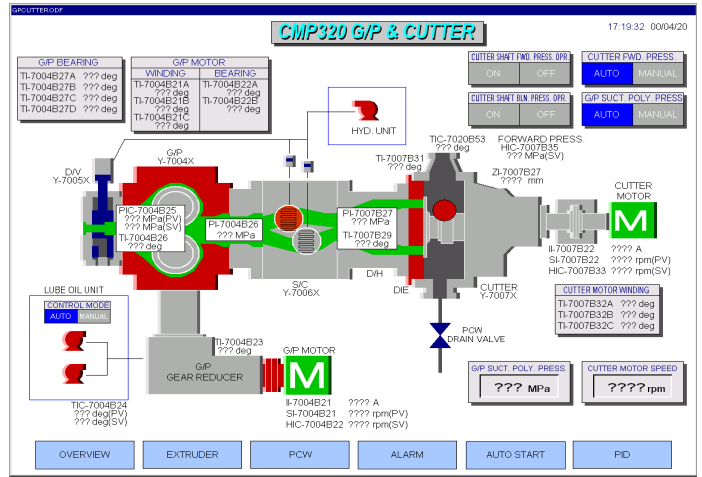
5) Local Start-up Panel

- a) Touch Panel Type
- b) Explosion Proof Type (Exi / Exd / Z purge)

Over View Display



G/P & Cutter Display



The PC station (EPAC-PCS) delivered in 1998 for India (3 sets) have been in service without any trouble. In the second stage, 3 sets for Chinese Single Extruder and CMP pelletizers are going in service early this year, in which HMI's are enclosed with Z-purge for local hazardous area.

Now, another 3 sets for Russia and China are under the inspection and manufacturing. We expect our PC station (EPAC-PCS) stand as a control system in a new century.

For more information ; THE JAPAN STEEL WORKS, LTD.

Sales Dept./Tokyo

Gate City Osaki West Tower 1-11-1, Osaki, Shinagawa-ku, Tokyo, Japan 141-0032
Phone : +81-3-5745-2072 Fax : +81-3-5745-2077

Hiroshima Plant

6-1, Funakoshi-minami 1-chome, Aki-ku, Hiroshima-city, Japan 736-8602
Plastics Machinery Dept.
Phone : +81-82-822-5515 Fax : +81-82-824-1512

Home page address : <http://www.jsw.co.jp/>