

## **A NEW COMPOSITE CUTTER BLADE "JSW-CRA" for Low-Viscosity Resin Cutting**

### *Introduction*

The abrasive resistance of the TiC cutter blades is from 6 to 10 times as long as that of the stainless steel types in the life, and those TiC cutter blades have contributed to a long reliable operation for a lot of customers in the plastics world. Recently, more durable blades have been required because more advanced and sophisticated resins have been coming up in the market place.

The "JSW-R" solid TiC cutter blades have been successfully used by many customers particularly for low-viscosity resins which cause a very difficult cutting. This time, since we have newly developed a composite version of "JSW-R" cutter blades, we would like to introduce the new version called "JSW-CRA" as follows.

### *Features*

- (1) TiC hard grains of the "R" type TiC blades have much finer and more flatly dispersed microstructure compared with the existing TiC blades. Furthermore, the "R" type TiC blades provide sharper edges and less chipping.
- (2) As the new blade "JSW-CRA" has proper abrasive resistance, the self-sharpening effect of the edge material is excellent and it can keep sharp edges even in an extended continuous operation.
- (3) As this new composite cutter blade "JSW-CRA" consists of TiC for the edge and stainless steel for the base material, the possibility of its breaking is much lower and safety operation can be promised accordingly. Besides, the "JSW-CRA" can reduce a lot of unexpected working such as plant shut-down and the disassembly of PCW (Pellet Conveying Water) system, being caused by its breaking.
- (4) Continuous self-sharpened edges can minimize the fine pellets and tails, and also show an excellent cutting particularly for low-viscosity resins.
- (5) More economical price can be realized by our thorough review of the manufacturing process.



Photo 1  
Appearance of JSW-CRA cutter blades

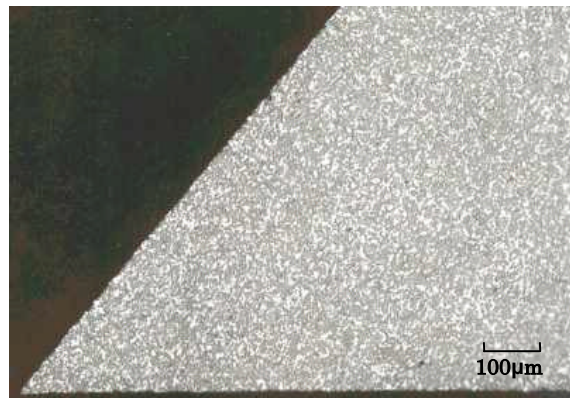


Photo 2  
Microstructure of JSW-CRA cutter blades

### **For more information ; THE JAPAN STEEL WORKS, LTD.**

Sales Dept./Tokyo

Gate City Osaki West Tower 1-11-1, Osaki, Shinagawa-ku, Tokyo, Japan 141-0032  
Phone : +81-3-5745-2072 Fax : +81-3-5745-2077

Hiroshima Plant

6-1, Funakoshi-minami 1-chome, Aki-ku, Hiroshima-city, Japan 736-8602  
Plastics Machinery Dept.  
Phone : +81-82-822-5515 Fax : +81-82-824-1512

Home page address : <http://www.jsw.co.jp/>