

## REMOTE MONITORING SYSTEM "LINK10"

In the field of extrusion machines, IT technology has been used to allow further automation for labor saving, quality management and production management. Increasing customers require to apply these latest technology to their specifications.

We released the remote monitoring system "LINK10", which consist of Ethernet LAN and TEX standard controller (EXANET) to supply such a market demand.

**LINK10 enables simultaneous data reception from 10 EXANET at the maximum by way of Ethernet LAN using LAN adapter (option).**

### Main functions

#### 1. Data collection

- Collection, display, and print of the measured data
- Statistical processing and trend graph display
- Data save to HDD and reading (CSV text form)

#### 2. Drive condition management

- Up-loading, down-loading, inspection, and print of the set value conditions
- Save of the set conditions to HDD and reading

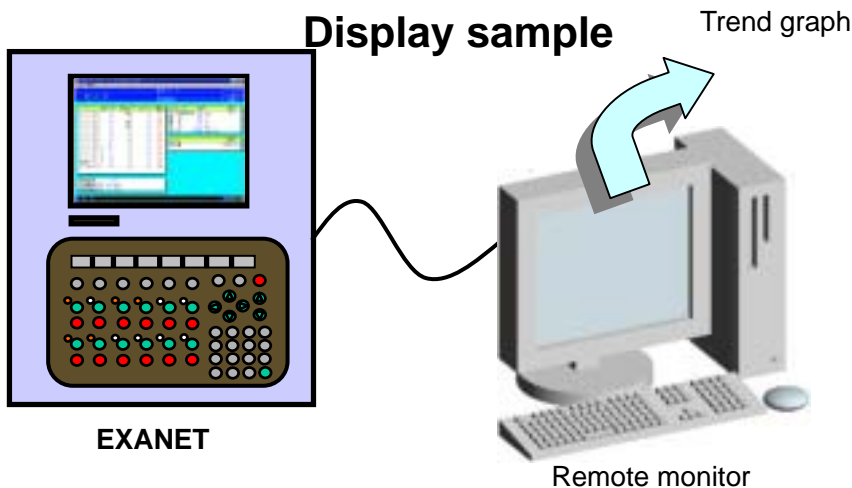
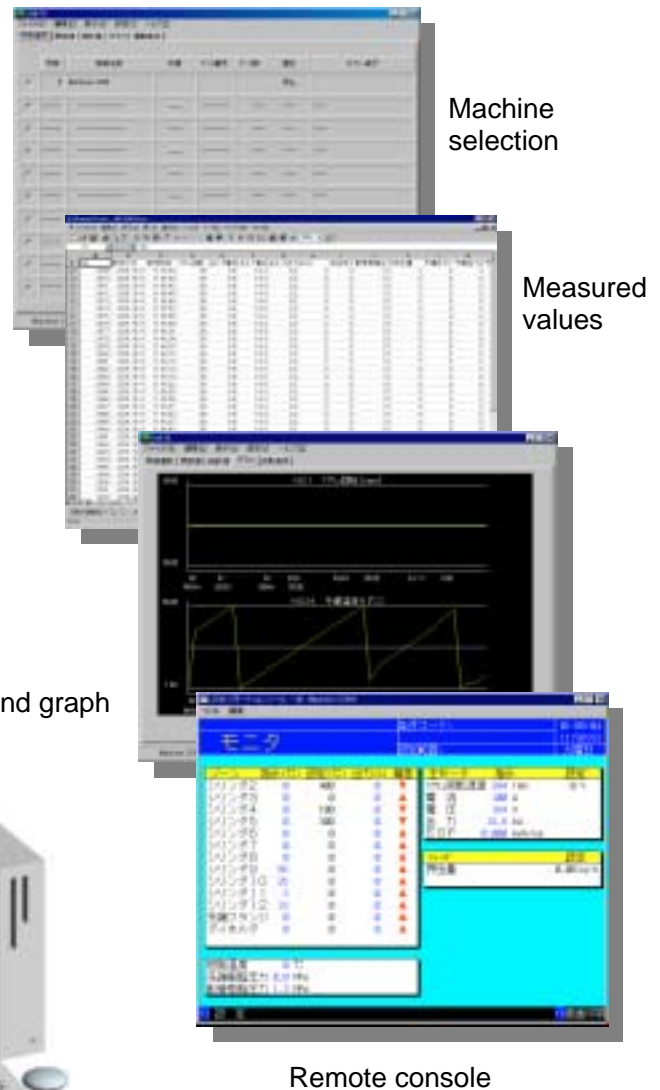
#### 3. Remote console

- The EXANET screen is displayed and changed on a remote personal computer
- Each screen is saved by image form (BMP)

#### 4. Alarm message

- When an alarm occurred, the message is sent to a specified mail address.

\* Example) Abnormality was detected in No.1 TEX.

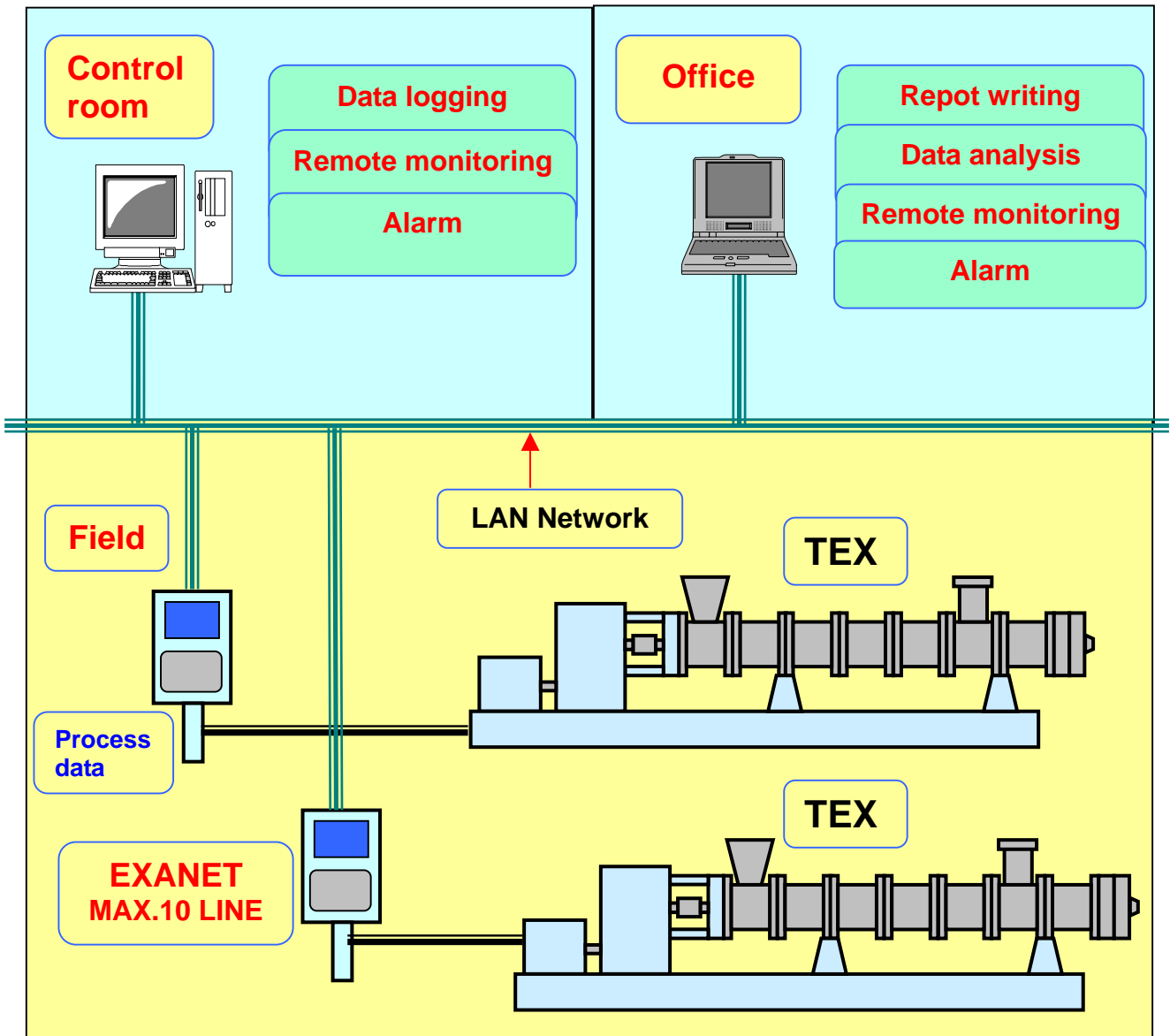


EXANET

Remote monitor

Remote console

**An example of system configuration**  
**- Concentrated monitoring system of compounding plant**



We are confident that this remote monitoring system is useful to promote efficiency of the factory and improve the product quality in the diversified compounding and recycling market.

For more information ; THE JAPAN STEEL WORKS, LTD.

Sales Dept./Tokyo

Gate City Osaki West Tower 1-11-1, Osaki, Shinagawa-ku, Tokyo, Japan 141-0032  
 Phone : +81-3-5745-2072 Fax : +81-3-5745-2077

Hiroshima Plant

6-1, Funakoshi-minami 1-chome, Aki-ku, Hiroshima-city, Japan 736-8602  
 Plastics Machinery Dept.  
 Phone : +81-82-822-5515 Fax : +81-82-824-1512

Home page address : <http://www.jsw.co.jp/>