

JSW THE JAPAN STEEL WORKS, LTD.

URL <http://www.jsw.co.jp/>

Division Gate City Ohsaki-West Tower, 11-1, Osaki 1-chome, Shinagawa-ku,
Head Quarter: Tokyo 141-0032, Japan
Phone: +81-3-5745-2081 Fax: +81-3-5745-2083~84
URL http://www.jsw.co.jp/inj_f/inj_index.htm

JSW Plastics Machinery Inc.

Head Office: 555 South Promenade Ave., Unit 104, Corona, California 92879, U.S.A.
Phone: +1-951-898-0934 Fax: +1-951-898-0944

Chicago Office: 540 Capital Drive, Suite 130, Lake Zurich, Illinois 60047, U.S.A.
Phone: +1-847-550-0704 Fax: +1-847-550-0725

Detroit Office: 24404 Catherine Industrial Drive, Suite 310 NOVI, Michigan 48375, U.S.A.
Phone: +1-248-449-5422 Fax: +1-248-449-6018

JSW Plastics Machinery (S) Pte Ltd

Head Office: 17, Gul Lane, Jurong Town, Singapore 629413, Republic of Singapore
Phone: +65-68614511 Fax: +65-68623166

Philippine Office: Chemdis Bldg., Don Jesus Blvd., Alabang Hills Village, Muntinlupa City,
Philippines
Phone: +63-2-809-8982 Fax: +63-2-809-6221

Indonesia Office: Jl. Palatehan Raya No.1-A, Kebayoran Baru, Jakarta 12160, Indonesia
Phone: +62-21-725-7486 Fax: +62-21-725-7865

JSW Plastics Machinery (M) SDN. BHD.

D6-5-G,(Ground Floor), Block D6,Pusat Perdagangan Dana 1,
Jalan Pju 1A/46,47301,Petaling Jaya,
Selangor Darul Ehsan, Malaysia
Phone: +60-3-78426076 Fax: +60-3-78426078

JSW Plastics Machinery (T) Co., Ltd.

368/4 Soi Soonvijai 4, Rama IX Road, Bangkok, Huaykwang,
Bangkok 10310, Thailand
Phone: +66-2-369-4007 Fax: +66-2-369-4035

JSW Plastics Machinery Vietnam Ltd.

Room103, Techno-Center Thang Long Industrial Park Dong Anh District,
Hanoi, Viet Nam
Phone: +84-4-951-6383 Fax: +84-4-951-6384

JSW Plastics Machinery (H.K.) Co., Ltd.

Room 907, Corporation Park, 11 On Lai Street, Shatin N.T., Hong Kong
Phone: +852-2648-0720 Fax: +852-2686-8204

JSW Injection Machine Maintenance (Shenzhen) Co., Ltd.

901, East, Dingxin Bldg., West Shahe Road,
Nanshan District, Shenzhen, 518055, People's Republic of China
Phone: +86-755-8602-0930 Fax: +86-755-8602-0934

JSW Plastics Machinery (Shanghai) Corp.

14-C, Strength Plaza, No.600-3, Tianshan Road, Shanghai, 200051,
People's Republic of China
Phone: +86-21-5206-7031 Fax: +86-21-5206-7033

JSW Plastics Machinery (TAIWAN) Corp.

Head Office: 1F, No.23, Da Hu 1st Rd., Guishan Shiang, Taoyuan, Taiwan, R.O.C.
Phone: +886-3-396-2102 Fax: +886-3-396-2104

Tainan Office: 15F-7, No.689-78, Shiau E. Rd., Yungkang City Tainan, Taiwan, R.O.C.
Phone: +886-6-311-4192 Fax: +886-6-311-4193



J-ELM SERIES

Large Size



Electric Servo Drive
Injection Molding Machine

JSW

Large Size Electric Servo Drive Injection Molding Machine J-ELIII Series

—Tomorrow's technology that is the fruits
of tradition and advance

JSW, a large injection molding machine pioneer, is a trail blazer developed upon extensive experiences.
Our advanced technology has actualized the excellent performance.
Integration of ecology and technology contributes to dramatic improvements in quality, productivity and economy.



Excellent high quality stable molding

Extra rigid clamping mechanism
Powerful output dual-servo injection machine
High speed and high pressure injection
High accuracy injection control

Phenomenal energy savings

Reduced power consumption
Less cooling water
No hydraulic oil
Reduction in equipment cost

J-ELIII SERIES
Large Size

High cycle

High plasticizing rate
High speed mold open/close and ejector
High speed mold height adjustment
High speed dual function

Functionality

Injection compression molding
Soft pack servo
SYSCOM2000 controller
Easy maintenance

[NOTE]

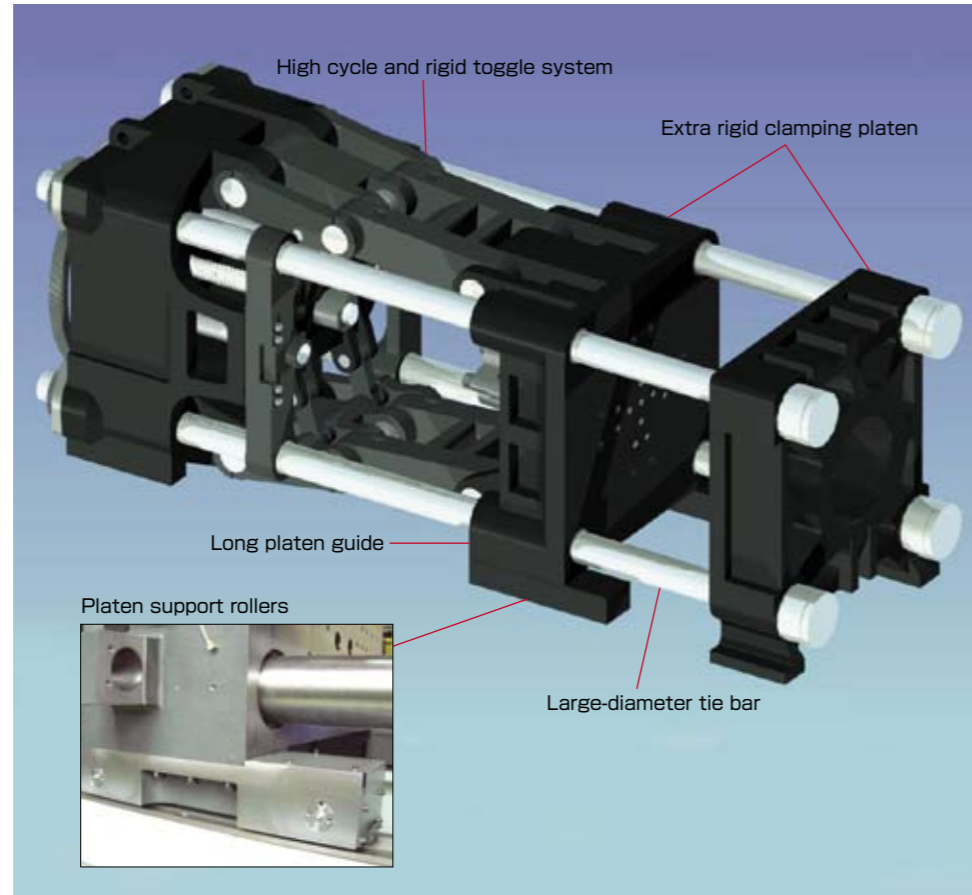
J-ELIII series electric servo drive machines ranged clamping forces 5400kN (550tf) ,6380kN (650tf) ,8340kN (850tf) ,are now called J-AD series.

- The appearance and the specifications of the machine may be altered for improvement without notice.
- Unauthorized reprint from this leaflet is prohibited.
- The photographs in this leaflet include options.

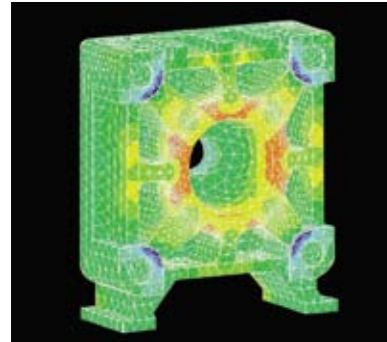
Extra rigid clamping mechanism

Pursuit of precision steady molding and durability has resulted in 1.2 times rigidity in comparison with the current machine. High rigid clamping ensures superior quality steady molding.

- New design high cycle and rigid toggle system
 - Rigid platens designed by FEM analysis
 - Large-diameter tie bar
 - Movable platen supporting system and long platen guide
- Long preservation of mold open/close accuracy and platen parallelism is guaranteed without maintenance.



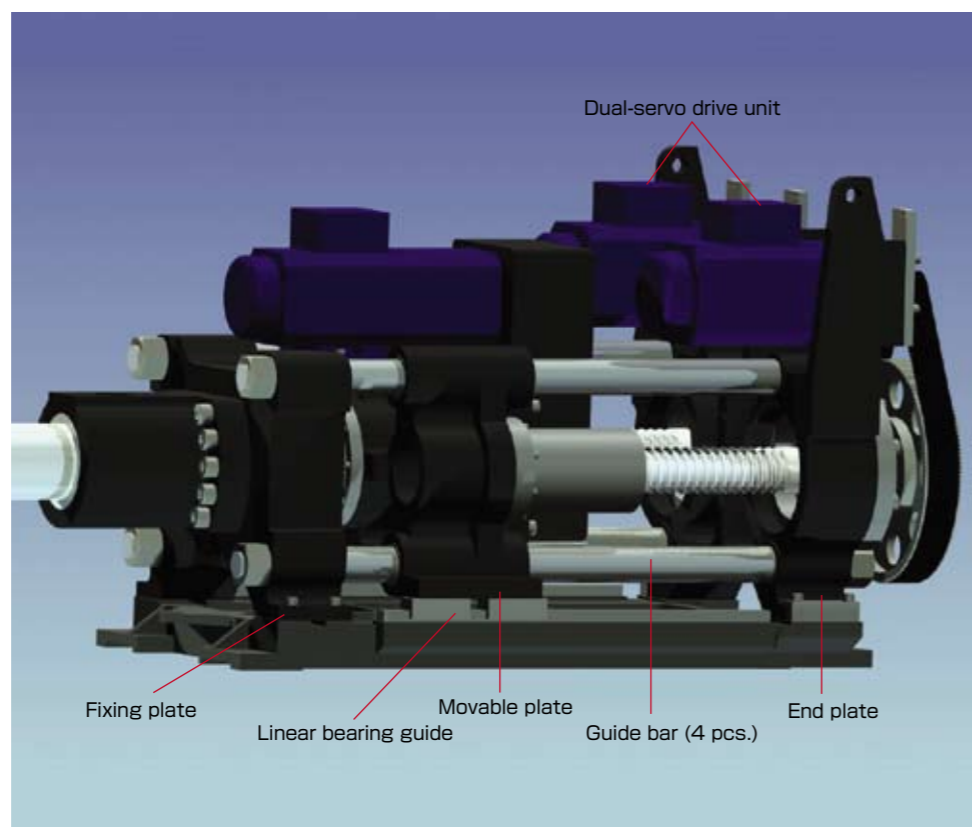
Extra rigid clamping platen



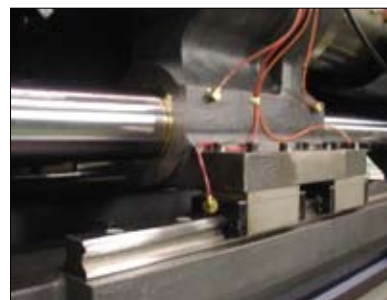
Powerful dual-servo injection unit

JSW high accuracy dual synchronous control system and rigid injection unit have actualized not only high-speed molding but powerful injection (patent pending).

- Sturdy injection system with plates (3 pcs.) and guide bars (4 pcs.) retaining high durability
- Linear bearing guide ensuring rigid stability and high accuracy

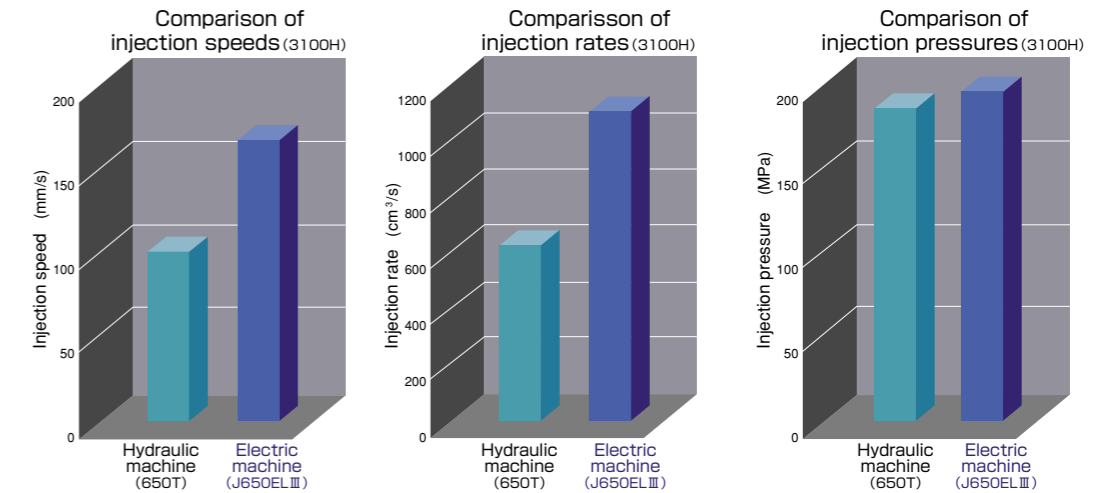


Accurate linear bearing guide



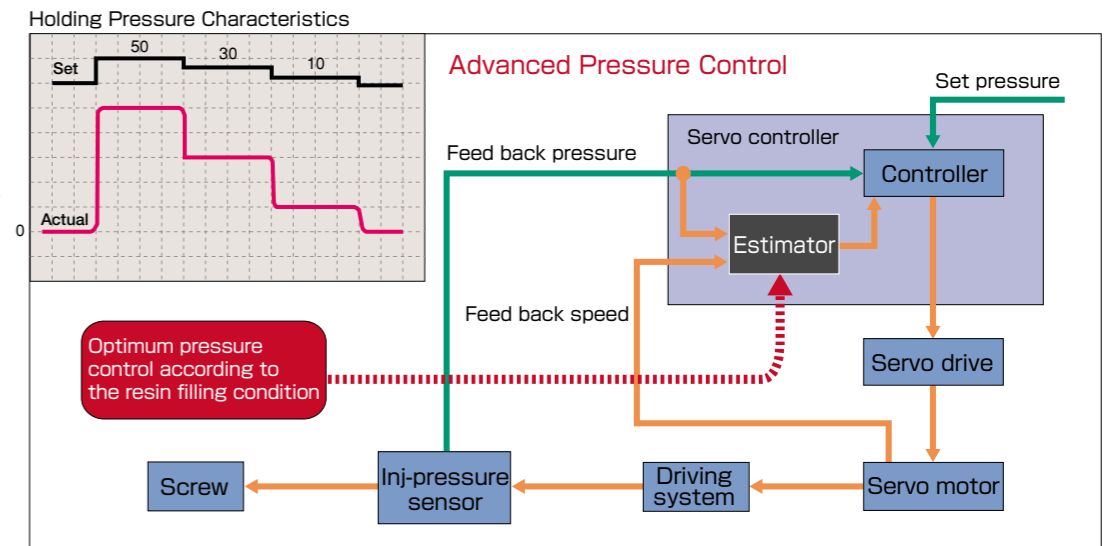
High speed and high pressure injection

Injection rate becomes 1.8 times faster than the hydraulic machine due to the high speed. Injection pressure also exceeds the hydraulic machine. It realized thin wall molding.



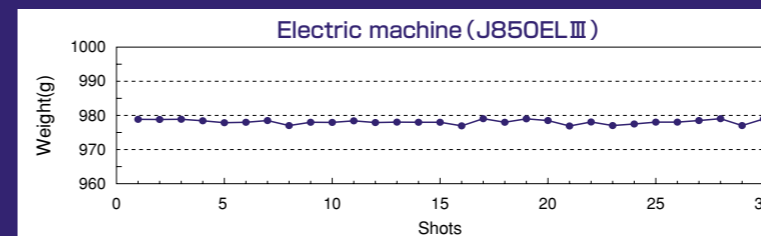
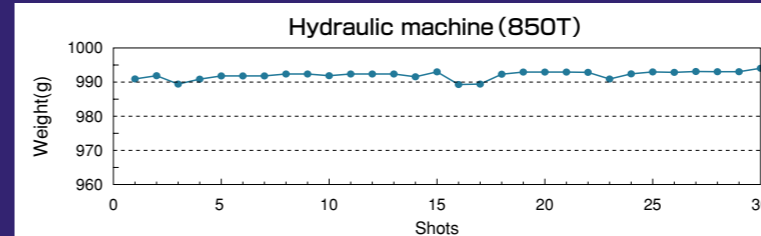
Accurate injection control

JSW's high performance feedback control (APC control) leads to excellent pressure trackability and responsivity in injection process (Patent No. 3168289).



EX. 1 Weight stability

J-EL III molding stability prompts improvements in large molding quality. Weight variations reduced to 1/2 or less of the hydraulic machine



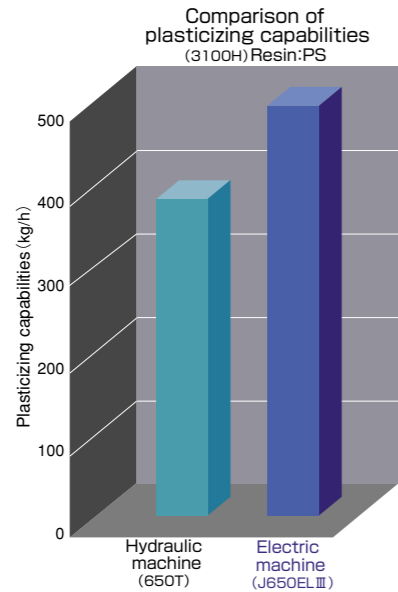
Product : Tray
Cycle : 64.7sec
Resin : PP

	Hydraulic machine (850T)	Electric machine (J850EL III)
Average weight (\bar{X})	993.0g	978.2g
Max. variation (R)	4.8g	2.2g
Deviation (σ)	1.20g	0.62g
R/\bar{X}	0.48%	0.22%
σ/\bar{X}	0.12%	0.06%

High performance screw

High plasticizing capability

Plasticizing becomes 1.3 times better than the hydraulic machine. It reduces the plasticizing time that occupies the cycle time.



New high melter M III screw

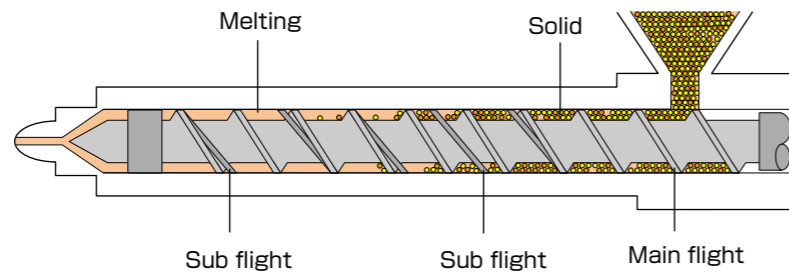
Upgraded new high melter M III screw, with improvement of the current high melter M III screw, is standard.



[Features of new high melter M III screw]

JSW's dual flight screw with the two sub flights between the main flight

- Reduction in molding distortion due to homogeneous well-kneading
- High speed screw revolution according to high dispersion
- High plasticizing capability by the long screw
- Reduction in cooling time due to low-temperature plasticizing



OPTIONS

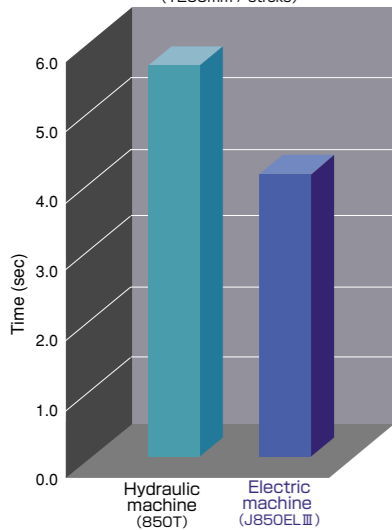
Screw development leader JSW provides the wide selection of screws to satisfy user needs.

- High plasticizing capability screw
- Well-kneading and high dispersion screw
- High viscosity resin screw
- Long-fiber resin screw

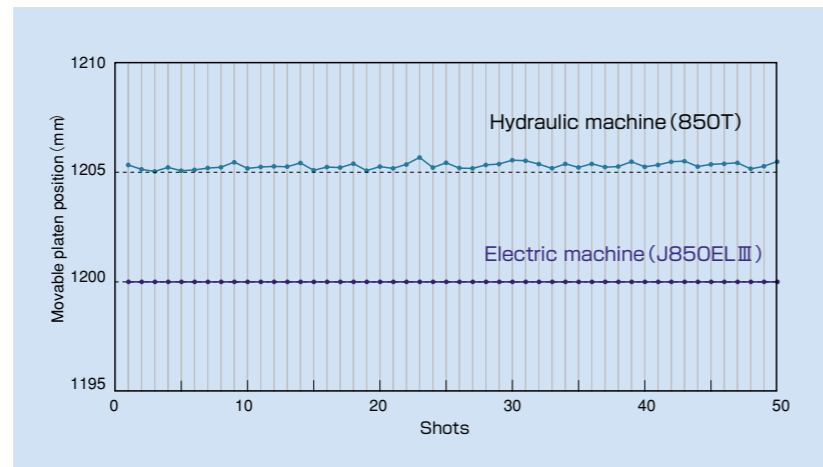
High speed mold open/close

High cycle toggle mechanism has actualized high speed mold open/close performance that eventually contributes to 20% reduction in dry cycle. Accurate platen stop has improvement in productivity, eliminating chuck failure of the take out robot.

Comparison of mold open/close time (1200mm / stroke)

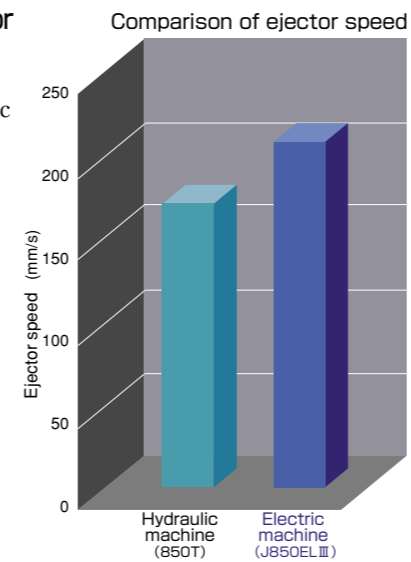


Comparison of platen stop precision (set at 1200mm)



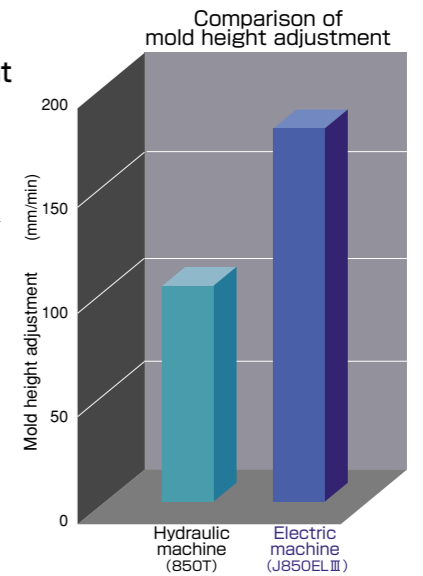
High speed ejector

Ejector speed has been modified in 1.2 times faster than the hydraulic machine that enables reduction in product removal time.



High speed mold height adjustment

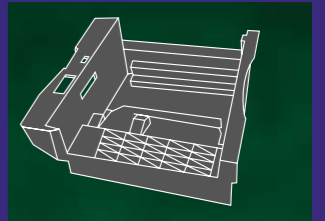
1.5 times faster mold height adjustment has been attained in comparison with the hydraulic system, which allows substantial setup time cutting.



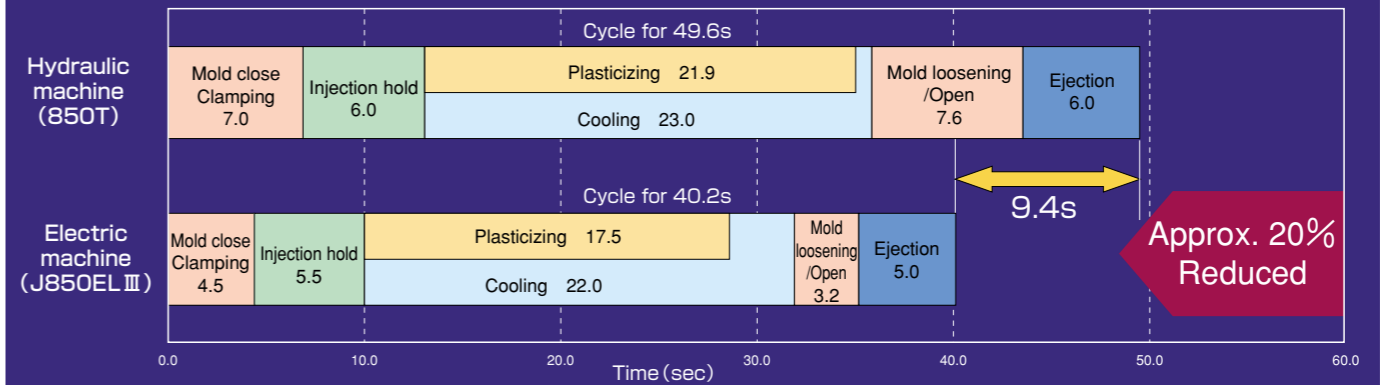
Ex. 2 Reduced cycle time

Cycle time reduction is available by high efficiency peculiar to J-EL III electric servo machines. High cycle performance completes productivity modification.

Product : OA device body
Resin : PPO
Qty : 1
Weight : 2514g

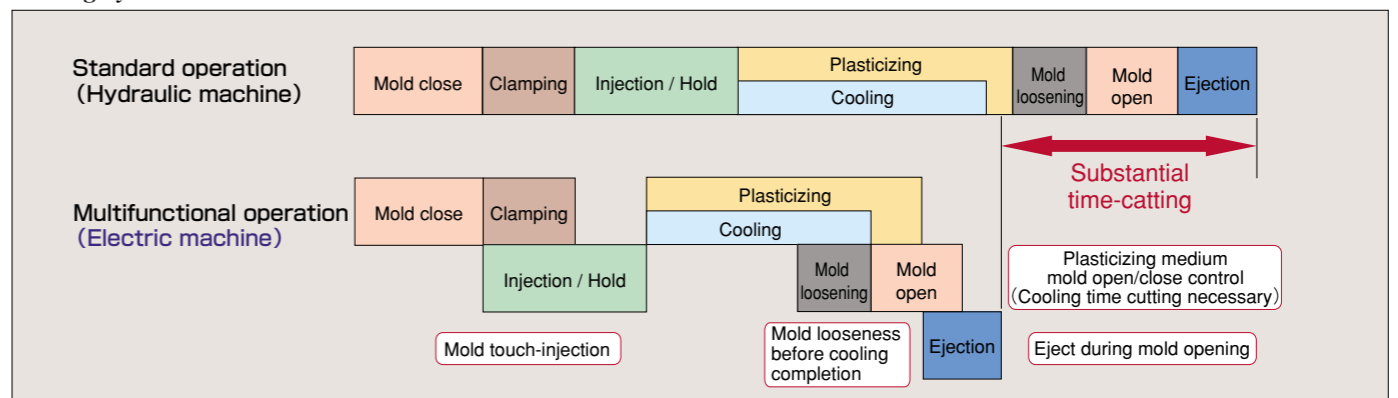


Comparison of cycle time (Standard operation)



Further cycle reduction with multifunctional operation

Full use of high speed multifunctional operation that is actuated by independent drive enables extensive reduction in molding cycle.



EX. 3 Energy savings

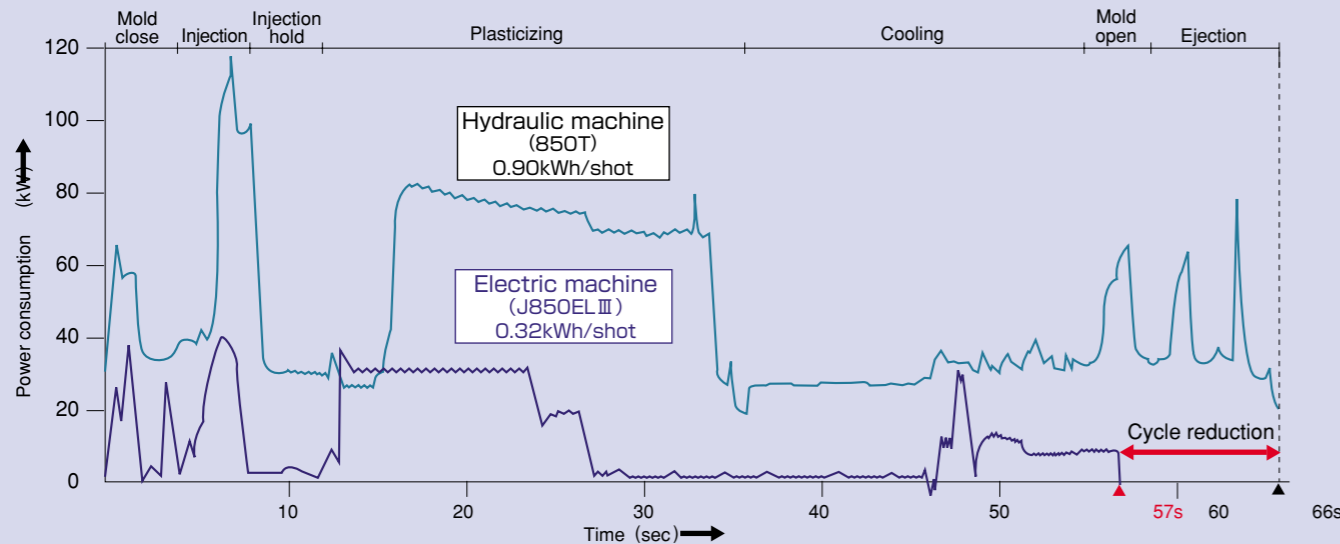
Reduction in substantial energy savings as well as cycle time has been actuated as to J-EL III large electric series.

- Power consumption is saved by 1/3 to 1/2 of the hydraulic machine
- Cooling water usage saving to 1/5 or less of the hydraulic machine
- No hydraulic oil
- Factory equipment cost is saved (such as the power, cooling water and air conditioning)

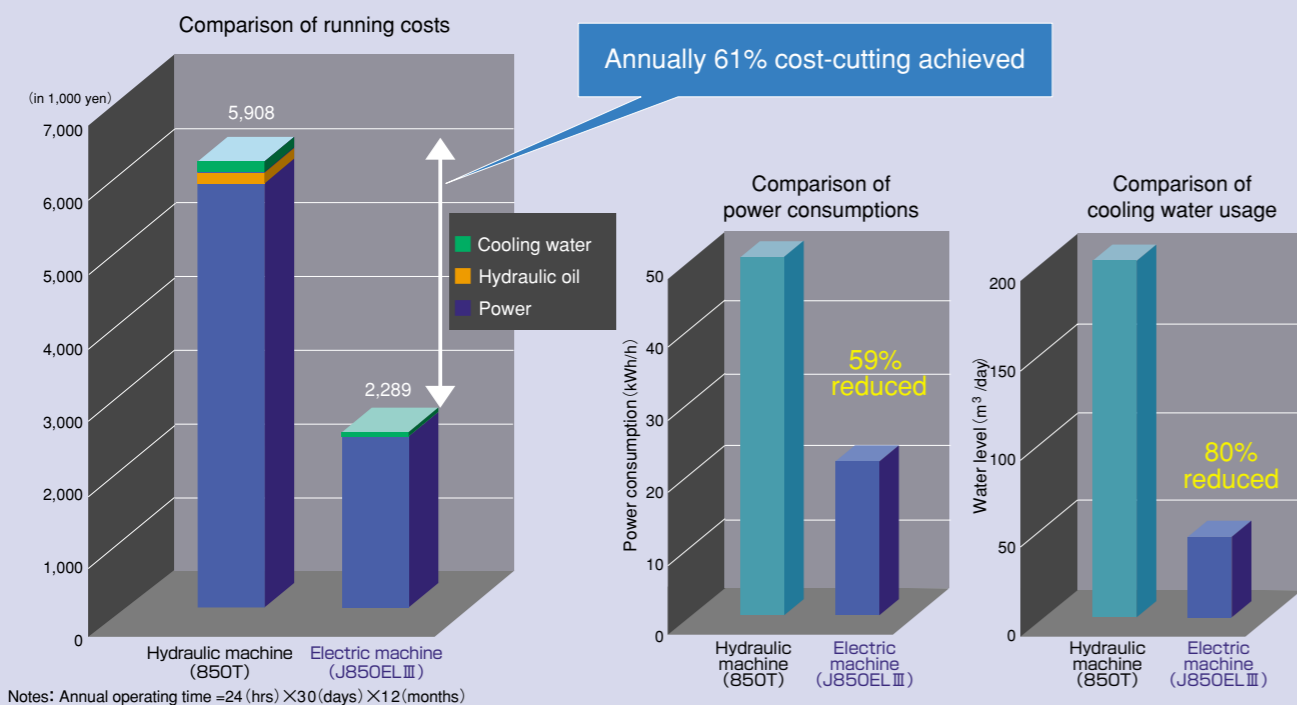
Product : Door frame (auto parts)
 Resin : PP
 Weight : 960g
 Cycle : 57s (electric motor)



Comparison of power consumption



Comparison of savings



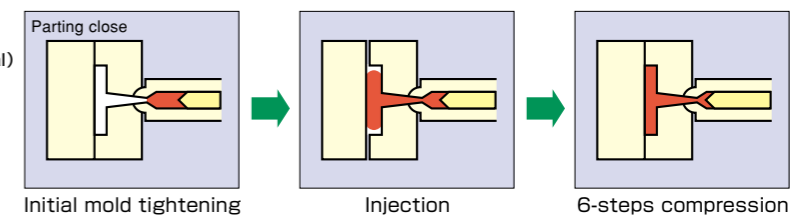
Substantial energy savings offer you enormous economic effects.

Injection compression molding

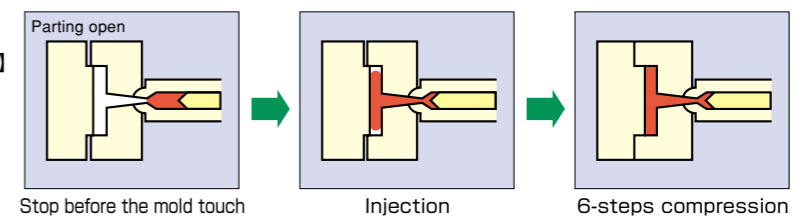
JSW's injection compression molding (standard equipment: Patent No. 1744469)

Injection compression molding is controlled by high accuracy platen positioning of JSW electric toggle machine. Arbitrary settings of operation mode and pressure level are available for various moldings.

Mode A
 A1~A6
 A7 (optional)
7 MODES



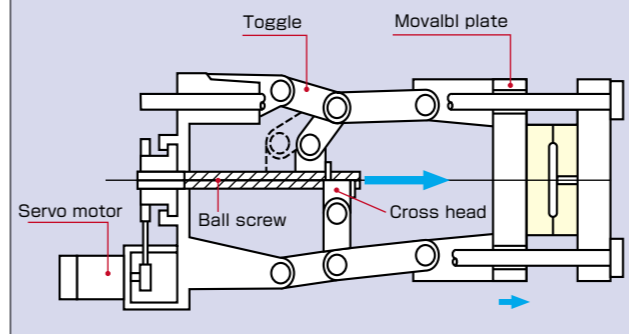
Mode B
 B1-B3
 [2 modes]
2 MODES



Equipment Mode
 Equipment modes A and B are available for diverse moldings.

[Effects of injection compression molding]

- Reduction in molding distortion
 - Improvement in transcription
 - Easier mold release
 - Cycle time reduction
 - Gas venting
 - Skin adhesion molding
- JSW's injection compression molding ensures precision 10 times than the direct pressure molding, which enables mold positioning.



EX. 4 Effects of injection compression molding

The following effects are to be gained by J-EL III injection compression molding: reductions in molding distortion, cycle time and clamping force.



Product : Roof of doghouse
 Resin : Recycled PP

	Standard	Injection compression (A1 mode)	Effect of injection compression
Distortion	7.5~11.0 mm	0.2~0.5mm	7.0~10.8mm reduced
Cycle time	74.8 sec	56.3 sec	18.5 sec reduced
Clamping force	1300 t	800 t	500 t reduced

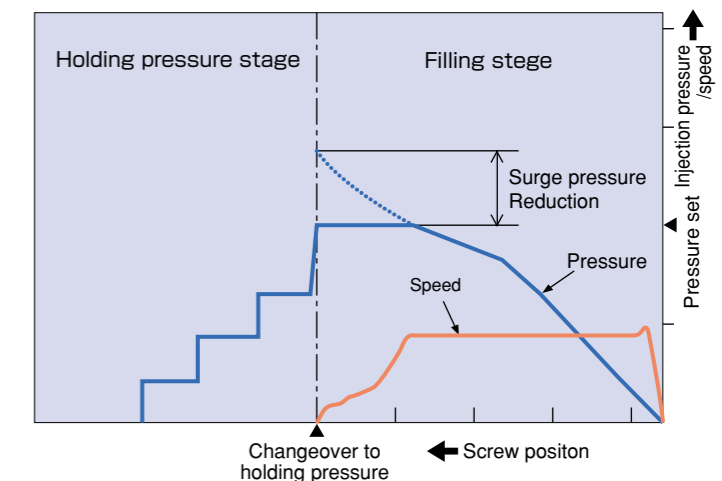
Soft pack servo

Soft pack servo, proper pressure injection molding (standard equipment: Patent No. 1755568)

Resin filling at a proper pressure is executed, suppressing the peak pressure immediately before holding pressure changeover in injection process. Soft pack servo produces effects on over-packing prevention to thin wall molding.

[Effects of soft pack servo]

- Reduction in molding distortion
- No flash
- Improvement in weight stability
- Reduction in clamping force (low-pressure molding)
- Longer mold life



Functionality

Operator-friendly interactive controller SYSCOM2000



●TFT color LCD with touch panel

Large TFT color LCD provides a clear picture for operator-friendly viewing. Interactive operation has been actualized with the screen-touch that allows ease of condition settings.

●High-touch keyboard

User-friendly design is offered with the mode selections arranged on the illustration of the molding machine, and easy setting prevents misoperation.

●Built-in controller

Controller composed of the display and operating keyboard is provided, which is embedded in the local box of the machine center with the least wasted space around the machine that enables all operations.

●Memory of molding conditions

40 mold conditions are to be stored in either a data card as well as internal memory.

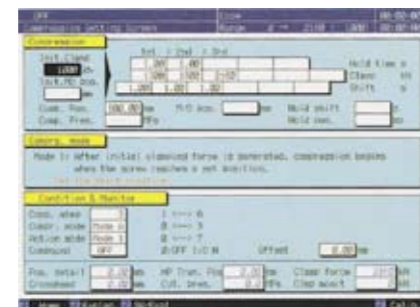
●Language switching function

Language selection is available between Japanese and English in response to the need for internationalization. Adaptable to other languages (optional).

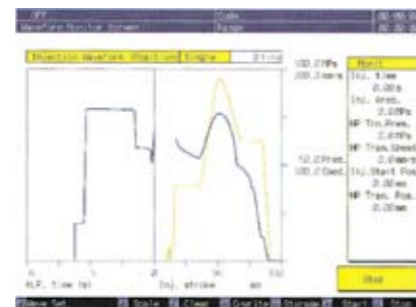
■ Overall set up



■ Injection-compression set up



■ Wave form monitoring

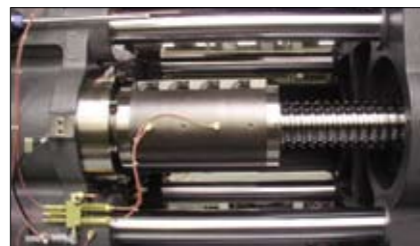


Eazy Maintenance



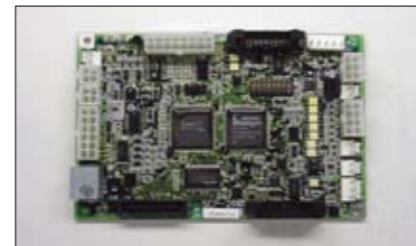
■ Automatic lubrication system

Automatic lubrication system is equipped in the clamping unit and injection unit. Alarm is to be issued upon the occurrence of greasing error that contributes to substantial improvements in maintenance.



■ High endurable ball screw

High endurable ball screws are adopted for high speed and high load.



■ JSW original servo amplifier

Large injection machine servo amplifiers, soft and hard, are our developments that enable quick maintenance at any circumstances.

■Standard Equipment

Unit item	
Injection and Plasticizing	
Standard open nozzle	
Screw cylinder	1)
High-melter MIII screw	2)
Screw suck back	
Purge cover (with LS)	
Swivel injection unit	3)
Cold screw start-up prevention	
Moldin g/ Pause temperature changeover function	
Automatic purging circuit	
Sprue break timing selection	
Suck back timing selection	
Injection and rotation program control (Closed-loop control)	Injection speed 1~6 steps Injection pressure steps Holding pressure Screw speed 1~3 steps Screw back pressure steps
Transfer to holding pressure by sensing Injection speed (IVS)	
Automatic greasing	
Cylinder temperature control	4)
Nozzle temperature control (SSR)	
Cylinder temperature remote setting	
Soft pack servo control	
Mold Clamping Unit	
Self-lubricating toggle bushings	
Automatic greasing	
High performance moving platen support	
Remote setting of mold open/close speed	
Remote setting of moving platen position	
Remote setting of ejector speed	
Remote setting of ejector position	
Automatic mold height adjustment	
Remote setting of mold height	
Automatic mold clamping force setting	
Compression molding (1~6 steps)	
Mold protection device	
Safety devices (electrical and mechanical)	
Take-out robot mounting holes	

Unit item	
Controller	
TFT color LCD controller with SYSCOM touch panel	
Storage of molding conditions	
Data card	
Soft touch start-up function	
Printer output terminal	5)
Self-diagnostic function	
Overall set screen	
Emergency stop button switch	
Safety key	
Dual function	
Time clock	
Unmanned operation switch	
Robot interface	
Japanese/English switching function	6)
Monitor	
Cylinder temperature monitoring function	
Heater circuit break	
Injection pressure monitor (IPM)	
Injection wave form monitor	
Injection wave form storage	
Statistical graph display	
Table display	
Display of mold temperature	7)
Lubrication failure alarm	
Abnormal alarm buzzer	
Production monitoring	8)
Operating time display	
Cycle monitor	
Molding condition upper/lower limit	9)
Maintenance	10)
Alarm history	
Set value history	
Servo control failure alarm	
General	
Mold cooling water closed circuit (with flow indicator)	
Accessories (Maintenance tools and ejection rods)	

■Optional Equipment

Unit item	
Injection	
Long nozzle	
SVN shut-off nozzle (spring type)	
Wear and corrosion-resistant cylinder	
Wear and corrosion-resistant screw	
Wide selection of screws	
Cylinder heat insulating cover	
Cylinder cooling unit (with blower)	
Shut-off nozzle (hydraulic or pneumatic)	
Hopper	
Hopper stage	
Mold Clamping Unit	
Daylight extension	
T-grooved platen	
Spacer plate	
Air jet	
Core puller circuit (hydraulic or pneumatic)	
Unscrewing motor control circuit	
Gate-cut circuit	
Automatic opening safety door	
Automatic opening and closing safety door	
Special locating ring	
Safety mat switch	
Cooling water closed circuit (stationary platen type)	
Ejector plate return confirmation circuit	
Mold mounting preparation unit	
Controller and Others	
Abnormal mold temperature warning	
Hot runner control circuit	
Language switching function	11)
Alarm light	
Communication function with host computer	
Printer (with printer cable)	
Printer cable (IBM compatible)	
Data card (40 sets mold/card)	
Calendar timer	
Plug socket for auxiliary equipment	
Levelling pads	

Notes:

- 1) N2000F cylinder for 1400H injection unit, and nitride cylinder for 2300H and up.
- 2) GP2 screw for 1400H injection unit.
- 3) Manual operation type for 1400H injection unit.
- 4) Solid state control (SSR) for 1400H injection unit and magnetic contactor control (MC) for 2300H and up.
- 5) The printer, printer cable and receptacle are optional.
- 6) The Japanese/English switching function is standard equipment.
- 7) Sensor and cable are not included.

- 8) Setting of production quantity and advance notice are possible and completion time is displayed.
- 9) Monitoring functions of the following particulars are equipped as standard. (Cycle time, Injection time, Rotation time, Mold opening-closing time, Cushion, Injection start position, Changeover position to holding pressure, Changeover pressure to holding, Screw back pressure)
- 10) Maintenance service time and areas are displayed.
- 11) One more language can be added, in addition to Japanese and English.

J-ELIII Large Size Electric Servo Drive : Module System [Wide Selection]

