

Environmental Management

As a responsible member of society, JSW regards operating in harmony with the environment as an important corporate responsibility. In our pursuit of production activities and environmental technologies that respect environmental integrity, we engage in business activities that contribute to the ecologically sustainable development of society.

Ever since we formulated a medium-term environmental plan in fiscal 2001 for the first time, we have been proactively promoting environmental management activities throughout the company. In fiscal 2018, we formulated the Fifth Medium-Term Environmental Plan (fiscal 2018 to fiscal 2019) and widened the scope of environmental activities to include the entire JSW Group. Accordingly, we engaged in activities to achieve the goals set out in the plan.

We have also created the Sixth Medium-Term Environmental Plan (fiscal 2020 to fiscal 2024) and have been stepping up our initiatives to achieve even higher goals.

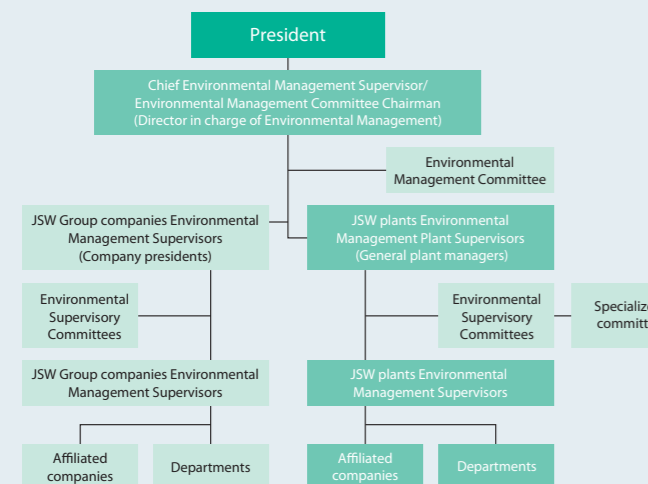
Action Plan

1. We aim to carry out environmental tasks in an organized way, and to implement environmental preservation activities continuously.
2. We will set appropriate objectives and targets for reducing the burden our activities impose on the environment with conserving biodiversity.
3. We aim to provide society with products and services that contribute to the preservation of the environment.
 - (1) We endeavor to increase the social value of our products in terms of environmental protection, safety and hygiene.
 - (2) We will provide products and services that reduce environmental loads by obtaining a clear grasp of environmental needs and developing technologies.

Environmental Management Structure

Recognizing the importance of conducting business activities in harmony with both the international and local communities, JSW has been promoting environmental management activities since 1997 as a Group-wide initiative.

The Environmental Management Committee, headed by the director in charge of environmental management, determines matters such as annual environmental management policies and programs of environmental activities for the whole company. Each plant has its own Environmental Supervisory Committee, which promotes environmental management activities and works hand in hand with other Group companies including affiliates to reduce the environmental impact of the Company's activities.



ISO 14001 Certification Progress

The Company's Hiroshima, Yokohama and Meiki plants and its Group companies, Japan Steel Works M&E, Inc., Fine Crystal Precision (S.Z.) Co., Ltd., and NIKKO-YPK SHOJI CO., LTD. (Head Office, Saitama Office, Kansai Branch, Kansai Sales District Office, Chubu Branch, Sendai Sales District Office, Nagano Sales District Office, Toyama Sales District Office, Kyushu Sales District Office), have obtained certification under ISO 14001, an international standard for environmental management systems.

We conduct checks to ensure that ISO 14001-certified business sites are endeavoring to maintain and improve their environmental management systems.

The Company and Group companies have adhered strictly to laws and ordinances, and there were again no violations in fiscal 2019.

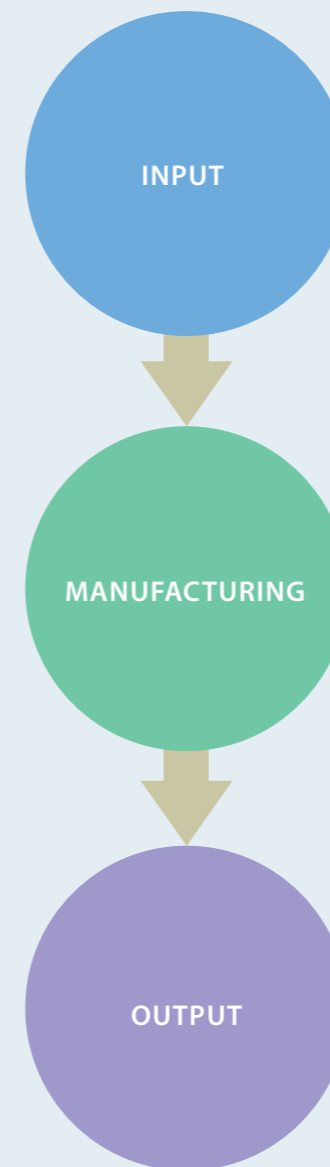
ISO 14001 Certifications of Business Sites

Business Site	Certification Date	Current Certification Body
Hiroshima Plant	December 18, 1998	Japan Quality Assurance Organization
Yokohama Plant	September 4, 2006	Japan Quality Assurance Organization
Meiki Plant	March 4, 2005	ASR International Corporation
Japan Steel Works M&E, Inc.	December 18, 1998	Lloyd's Register Quality Assurance
Fine Crystal Precision (S.Z.) Co., Ltd.	March 7, 2007	Intertek
NIKKO-YPK SHOJI CO., LTD.	February 7, 2005	Japan Quality Assurance Organization

Business activities and environmental impact

The following diagram shows the JSW Group's environmental impact resulting from its manufacturing activities in the Material and Engineering Segment (Japan Steel Works M&E) and the Industrial Machinery Products Business (JSW).

We measure both inputs (consumption of energy, water, and the like) and outputs (such as waste, carbon dioxide, and water resulting from manufacturing processes), and use the data in our environmental improvement activities.



Materials

- Metals (including steel, non-ferrous metal)
- Plastics
- Rubber, timber, etc.



Chemical substances
5,881 t



Energy
2,993 TJ



Water
22.95 million m³



Steel and energy products

- Forged steel components for nuclear power reactors
- Monobloc rotor shafts
- Turbine casings for thermal power generation
- Clad steel plates/clad steel pipes

Industrial machinery products

- Twin-screw extruders
- Single-screw extruders
- Film and sheet equipment
- Electric servo drive injection molding machines
- Blow molding machines
- Magnesium alloy injection molding machines
- Excimer laser annealing systems

79% of total waste volume is recycled

Total waste volume
82,259 t

Waste emission volume
17,032 t



Recycling volume
65,210 t



CO₂ (from electric power and fuel)
189,469 t-CO₂



CO₂ (from domestic transportation)
2,608 t-CO₂



Chemical substances (amounts emitted and transferred)
211 t



Waste water
16.88 million m³

