

NSC460DBW-C

Super Large-Area Dual Screen Changer

Foreword

In recent years, polymerization processes throughout the world have steadily become more and more efficient, with production lines being able to process 70 – 80 tons of resin pellets per hour. In this age of greater efficiency, a bottleneck in the screen-changing portion of the processes has become apparent. Our new super wide-area dual screen changer was developed specifically to solve this problem.

Features

- This system offers super large-area surface (1.5 times larger of that of the conventional company products, NSC460DB-M)
- Continuous operation is possible, because there is no need to stop the extruder in order to change the screen.
- We adopted an abrasive resistance treatment to the sliding parts.
- The slide bars move slow, so that machine operation is safe.
- Short time replacement of the breaker plates is possible. (It includes the jigs)

Specifications

1. Shape of the screen: Cartridge type
2. Number of the cartridges: 96
3. Screen area: 23000 cm²

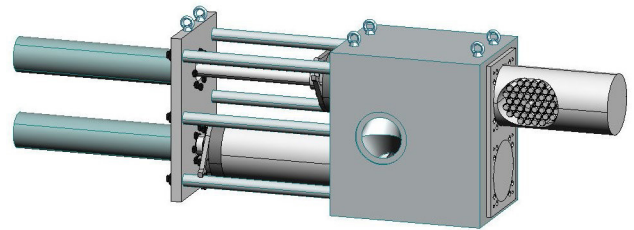


Fig.1 Rendering of NSC460DBW-C

Afterword

This new super large-area screen changer offers the following merits.

- dealing with technical advantages,
- dealing with more advanced fine screen,
- ensuring lower energy requirements and longer life,

and more.

