

# The Environment

## Environmental Policy

JSW recognizes that as a responsible member of society it has an important duty to operate in harmony with the environment. We also engage in business with the aim of contributing to the sustainable development of society in harmony with the ecosystem through production activities that respect environmental integrity, and by developing environmental preservation technologies.

### Action plan

1. We aim to carry out environmental tasks in an organized way, and to implement environmental preservation activities continuously.
2. We will set appropriate objectives and targets for reducing the burden our activities impose on the environment with conserving biodiversity.
3. We aim to provide society with products and services that contribute to the preservation of the environment.
  - (1) We endeavor to increase our product's social value to in terms of environmental protection, safety and hygiene.
  - (2) We provide products and services to reduce environmental loads by obtaining a clear grasp of environmental needs and technical development.

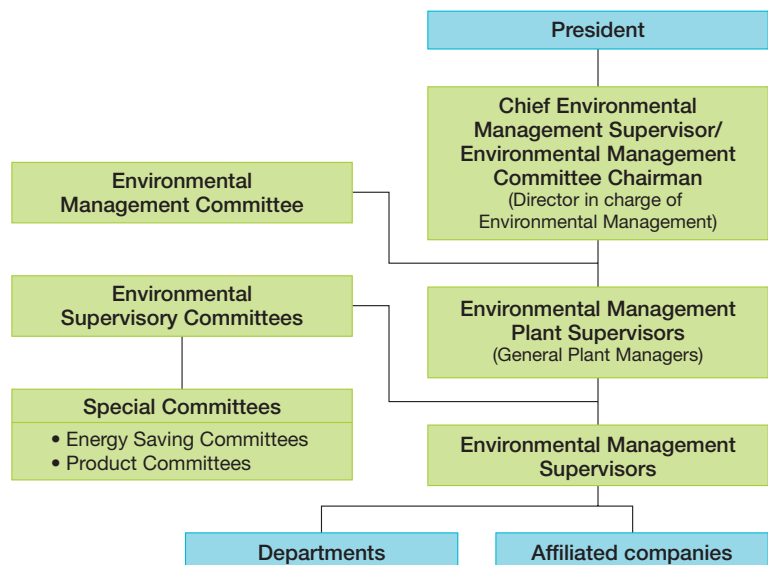
### Common policy for business facilities

Taking into consideration its business activities, the local community and the surrounding environment, each plant operates by setting out its own environmental policy, objectives and targets using methods compliant with international standards.

1. Respect laws and regulations and agreements we have concluded with external parties.
2. Prevent pollution and reduce and appropriately treat waste, to conserve the ecosystem.
3. Improve "resource productivity" through implementation of energy efficiency, resource efficiency, and recycling.
4. Inform employees and other companies residing within our facilities of our policies and require their cooperation.

### Environmental Management System

The Environmental Management Committee, headed by the Director in charge of Environmental Management, determines matters such as annual environmental management policies and programs of environmental activities for the whole company. Each plant has its own Environmental Supervisory Committee, which promotes environmental management activities and works hand in hand with other Group companies including affiliates to reduce the environmental impact of the Company's activities.



## Medium-Term Plan for Environmental Management Activities (Fiscal 2009–2012)

We are promoting environmental management activities at our Muroran, Hiroshima and Yokohama plants. Social awareness has changed greatly regarding the need to deal with such issues as the mitigation of global warming, saving energy, and processing waste.

We are working to attain the targets in our medium-term plan for environmental management activities covering the four years from fiscal 2009–2012. In fiscal 2009, the opening year of the plan, measures were taken at each plant to meet these targets.

With regard to the observance of laws and regulations, we implement environmental patrols at environmental-related facilities, plants, and other sites in the vicinity. We confirm that all environmental preservation-related laws and regulations are being observed, and that the environmental management system is functioning properly. To effectively communicate the results of the environmental patrols, we carry out employee training programs for affiliates and collaborating companies, as well as at our headquarter.

## Environmental Preservation Activities

The following section introduces some of JSW's wide range of environmental preservation activities.

### Reducing atmospheric emission of nickel compounds

At the Muroran Plant, we are working to ensure that atmospheric emission of nickel compounds are within prescribed standards by making the necessary revisions to operations, processes, and equipment, and through the introduction of new equipment.

Working together with the local municipal government since fiscal 2005, we have created our own voluntary controls, and have been undertaking various activities. In fiscal 2010, we started operation of a large scrap cutting facility in order to efficiently collect dust that is generated during cutting.



### Safety and disaster prevention activities

We regularly implement environmental patrols at each plant to verify management status and audit data relating to specific air- and water-related facilities, pretreatment facilities, oil-water separation tanks and other facilities.



### Community contributions

As part of our social contribution activities, we conduct a cleanup campaign along the main streets in the vicinity of our Yokohama Plant in April each year.

The cleanup campaign is conducted along roads between a nearest Station and our Yokohama Plant's main gate. Employees collect empty cans and pick up plastic bottles and cigarette butts. The trash is then separated and disposed of. We intend this to be an ongoing activity.

